

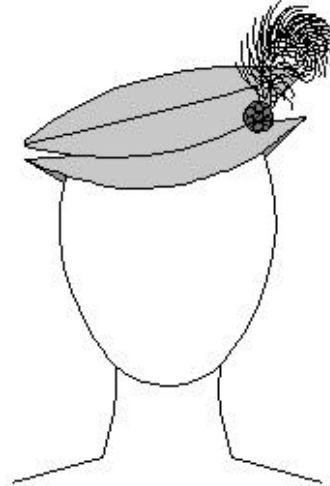
# The Flat Cap

The flat cap is a brimmed hat with a seamed crown, similar in shape to a beret.. It was worn by all ages and classes, male and female.

The flat cap, in the period, was often knitted, not sewn. The cap was knitted to shape, but very oversized, and then felted and shrink to make a dense, thick felt.

The flat cap, like many other hat styles, was often worn over an undercap such as a caul, biggin, or coif.

Two options in brim width are included



## **Materials**

### **Fabric**

The flat cap can be made of silk, velvet, wool, and other fabrics. We do not recommend using extremely heavy fabrics such as upholstery velvet, as they can make the brim edge very bulky. Light fabrics will need to be flatlined with a second layer of fabric to give body.

### **Trim and Embellishment**

The embellishment for the flat cap was centered on the band. The band could be made of elaborate trim, or it could be a band of jeweler's work known as a biliment. Feathers, either single or in bunches, were worn sewn or pinned into the band, usually sticking up in a tuft at one side. Large decorative brooches or badges often secured the feathers in place.

A narrow trim or twisted cord can be applied to the outer edge of the brim. This works well to visually flatten an overly bulky edge.

## Making the Flat Cap

### Cutting

**Note:** Piece 1A is used for the brims for the flat cap, as well as the Tall Hat and the Soft Cap.

Cut three of Brim 1A in fashion fabric, two in craft fleece or felt, one in flatlining if desired, and one in plastic canvas. Cut Crown 2B in fashion fabric and in flat lining, if desired.

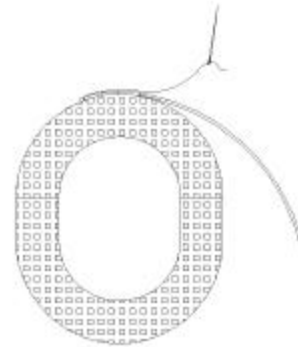
### The Brim

Trim 5/8" seam allowances off outer and inner edges of plastic canvas brim.

Cut a length of millinery wire 36" long.

Thread a large darning needle with heavy thread.

Holding wire to the side of (not on top of) edge of brim, stitch wire to plastic canvas brim edge, stitching through holes in canvas, with a buttonhole/blanket stitch approximately 1" long. Overlap ends at least 1" and take a few smaller stitches along overlap to hold.



Pad the brim on both sides. On inside edge, Trim lower seam allowance even with edge of plastic canvas brim. Fold upper seam allowance around frame to lower side, basting in place. Trim outer edges even with wire.

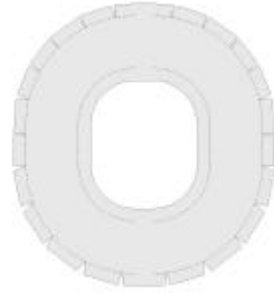


### Brim

Stay stitch inner edges of brims 1A.

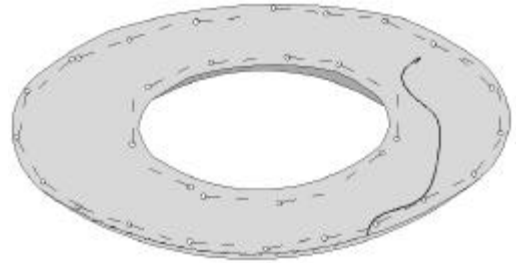


Press outer edge seam allowances of brims to inside, notching seam allowances as needed to lie smoothly.



### **Brim Edge**

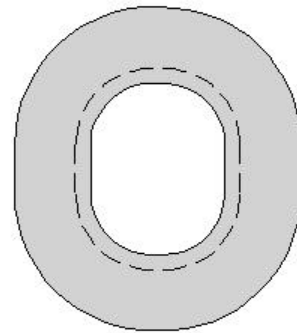
Pin one Brim to underside of Brim Frame. Pin the other piece to the top side of the Brim frame. Pin edges until taught, having folded edges together, and slipstitch.



Baste inner edge seam allowances together.

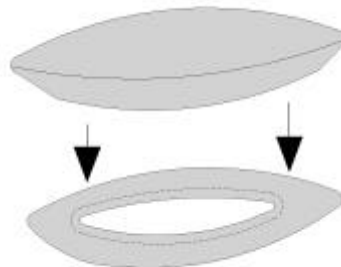
### **Crown**

Flatline Lower Crown (1A) and Crown, if desired.



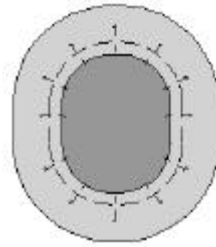
Stay-stitch inner edge of Lower Crown.

Stitch Crown to Lower Crown at outer edges. Trim and grade seam. Clean finish .



Turn Crown right side out. Pin to brim, having right sides together.

Stitch seam. This step is far easier if you have a free arm sewing machine,.



### Apply Bias Binding to Seam

Open out one edge of 1/2" bias tape (for extremely thick fabrics, you may need to use 1" bias).

Stitch bias tape to seamline on BRIM side of hat, overlapping ends.

Trim seams to under 1/4".

Fold bias to inside of hat and stitch to seamline.



### Sweatband

To protect the edges of the hat from soil and add comfort, sew a 1" band of grosgrain ribbon or light **undyed** leather inside the edge of the hat.

